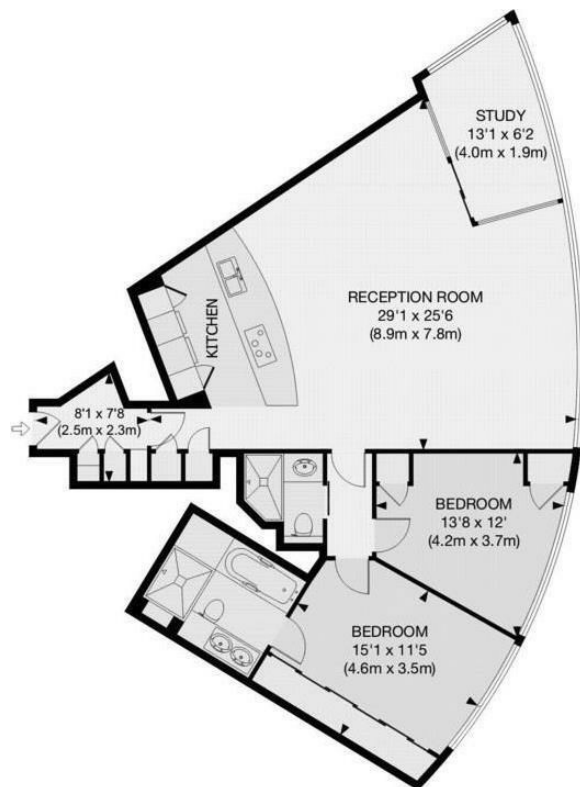




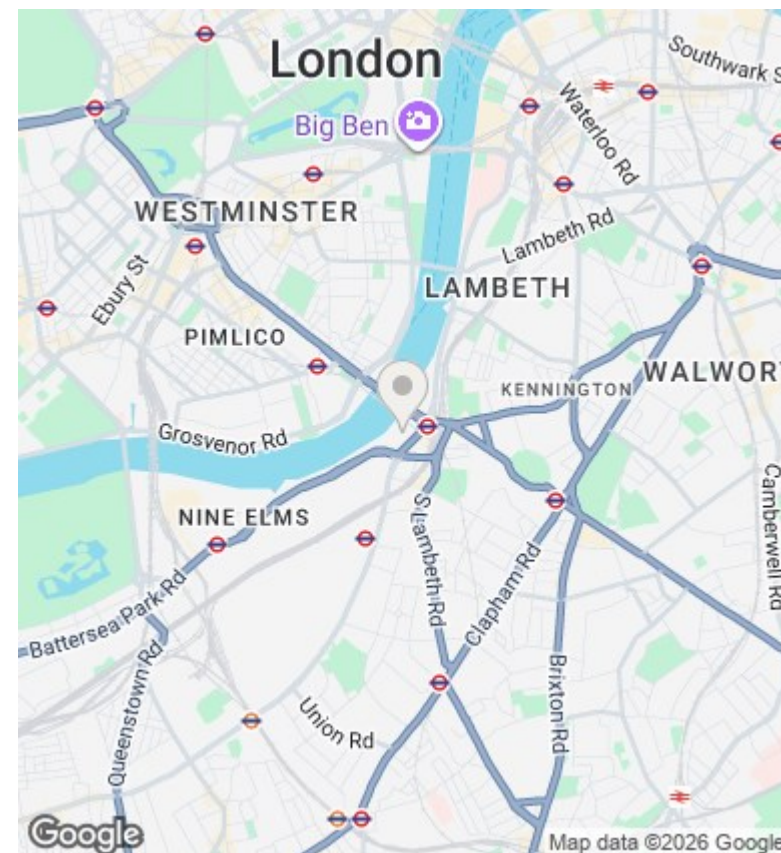
The Tower, St. George Wharf, Vauxhall, London SW8 2BW

£1,475,000

- 24h CONCIERGE
- CINEMA
- VALET PARKING
- FULL RIVER VIEWS
- VIDEO VIEWING AVAILABLE
- RESIDENCE LOUNGE
- SMART HOME SYSTEM
- GYM AND SPA WITH SWIMMING POOL OVERLOOKING RIVER
- GATED DEVELOPMENT
- UNDER FLOOR HEATING AND AIR COOLING



APPROX. GROSS INTERNAL FLOOR AREA 1075 SQ FT / 100 SQ M



Viewings

Viewings by arrangement only.
Call 02077225022 to make an appointment.

Council Tax Band

D

EPC Rating:

B

Energy Efficiency Rating		Current	Potential
<i>Very energy efficient - lower running costs</i>			
(92 plus) A			
(81-91) B		84	85
(69-80) C			
(55-68) D			
(39-54) E			
(21-38) F			
(1-20) G			
<i>Not energy efficient - higher running costs</i>			
England & Wales		EU Directive 2002/91/EC	